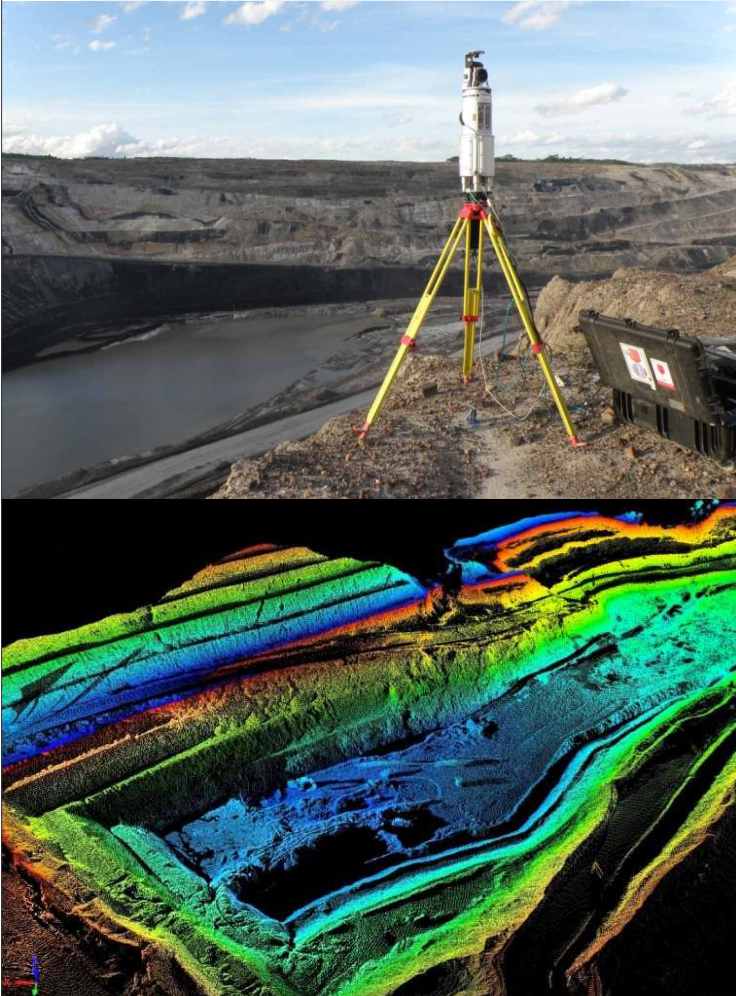


Terrestrial Laser Scanning (TLS)



TLS provide highly accurate 3D elevation data at a cost effective rate. With accuracy = 1 cm or better, can be integrated and rectified with digital camera, TLS can produce a better data of object geometry than any other flat surveys.

Applications:

- Volumetric Surveys
- Excavation/Landslide monitoring
- Reconciliation Surveys
- Topographic Surveys
- DTM/DEM/surface model creation
- Cross sections & profile generation
- Orthometric image overlays
- Animated fly-through's
- 2D/3D survey plans
- Infrastructure As-builts (highways, bridges etc.)
- Forestry log yield forecasting

Advantages of TLS:

Speed:

Large volumes of accurate survey data can be acquired in hours rather than days.

Cost:

Reduced risk in 'return visits' due to incomplete of data.

Accuracy:

Better than 1cm accuracy on objects at distances up to 1000m.

Safety:

Access to survey areas may only be required once or possibly not at all.

Archive:

Provides invaluable reference data fot monitoring and future projects.

Flexibility:

Data exported to a wide variety of formats including ASCII, DXF and Vulcan.

For further information on how PTMI can be of service to you, please contact us at:



Jl. Pejaten Barat II No. 20, Unit A, Jakarta Selatan
12510, Indonesia
Tel 62 21 7179 3137 - Fax 62 21 7179 0361
www.ptm3i.com
E-mail: info@ptm3i.com