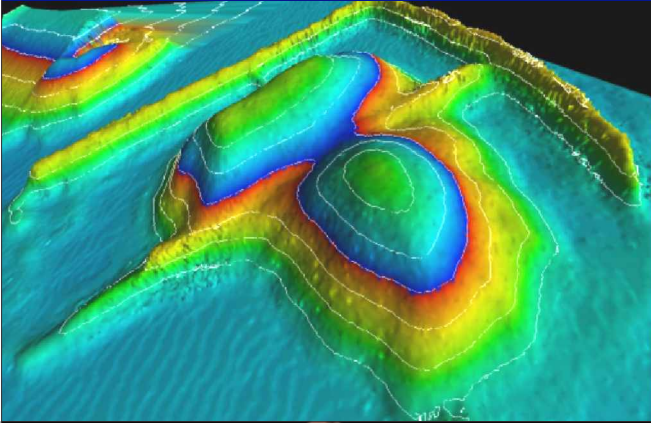


UAV Drone Aerial Mapping



PTMI's UAV Drone mapping technology provides Clients with access to low cost aerial mapping and precise 3D modelling data solutions.

This efficient, accurate and cost effective technology together with the professional processing capabilities of PTMI, allow for superior data deliverables including:

- ✓ Orthophoto (geospatially corrected aerial imagery)
- ✓ Near Infrared & NDVI imagery
- ✓ Surface Models—DEM / DSM / DTM
- ✓ Volumetric Calculations
- ✓ 3D Models and TIN's (Triangulated Irregular Networks)
- ✓ Feature Mapping (roads, rivers, buildings etc.)
- ✓ Contours
- ✓ Palm Tree Counting

Industry Sector Applications

- ✓ Forestry
- ✓ Agribusiness
- ✓ Land Development
- ✓ Natural Resources
- ✓ Environmental Management
- ✓ Urban Planning / Development
- ✓ Engineering & Construction
- ✓ Transportation & Infrastructure
- ✓ Site Monitoring
- ✓ Change Detection
- ✓ Archaeology
- ✓ Coastal Management
- ✓ Tourism & Culture



For further information on how PTMI can be of service to you, please contact us at:



Jl. Pejaten Barat II No. 20, Unit A, Jakarta Selatan
12510, Indonesia
Tel 62 21 7179 3137 - Fax 62 21 7179 0361
www.ptm3i.com
E-mail: info@ptm3i.com