



3D Mapping

Surveying

GIS

About PT. Map Tiga Internasional (PTMI)

Formerly known as PT McElhanney Indonesia, **PTMI** is a Jakarta-based company providing aerial mapping and surveying expertise.

Our expert knowledge of surveying and mapping technologies enables us to collect data on all platforms including fixed wing, rotary wing, vehicular and stationary platforms. In addition, PTMI's high resolution aerial photography and ground surveying services offer a complete spatial package to our clients. Only PTMI's personnel collect and process data which ensures the ultimate level of informational security for all clients.

Surveying



PTMI provides surveying services to the public and private sectors including:

- ✓ Agribusiness
- ✓ Forestry
- ✓ Mining
- ✓ Land Development
- ✓ Archaeology
- ✓ Telecommunications
- ✓ Transportation
- ✓ Infrastructure
- ✓ Hydroelectric
- ✓ Tourism & Culture

Airborne Operation



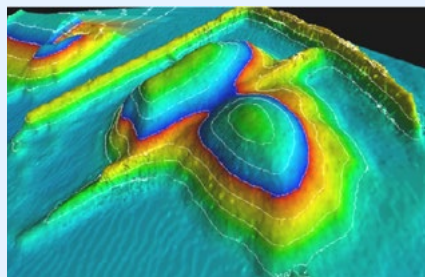
PTMI operates a Caravan 208B fully equipped for :

- ✓ Light Detection and Ranging (LiDAR)
- ✓ Digital Air Photo (DAP)
- ✓ Aeromagnetics
- ✓ Electromagnetics
- ✓ Radiometrics
- ✓ Gravity Surveys



UAV

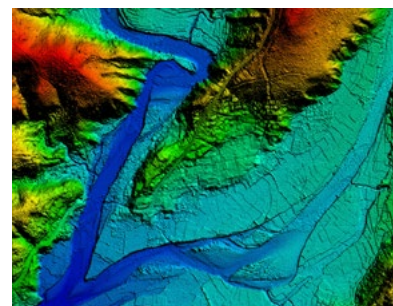
PTMI's UAV imagery combined with accurate ground surveys and in-house aerial mapping know how produce quality mapping/imaging deliverable results.



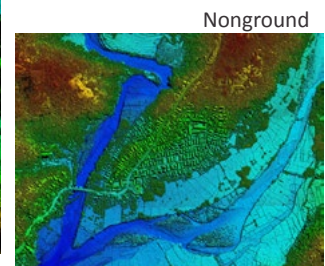
Stock Pile Analysis



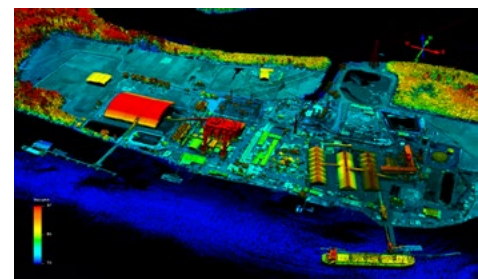
LiDAR



Ground

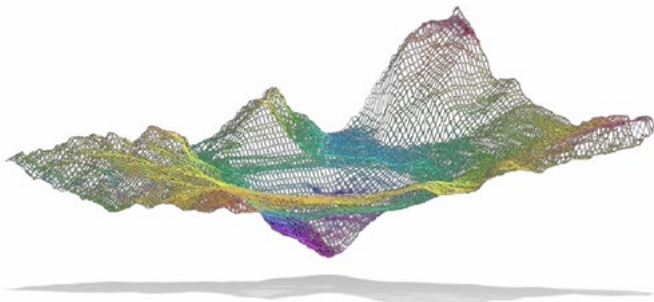


Nonground



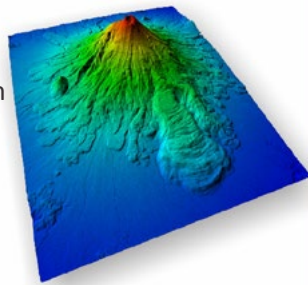
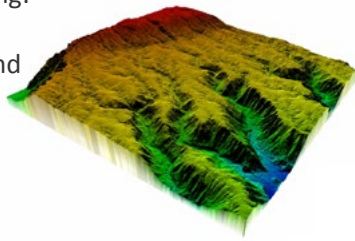
LiDAR technology is one of the most accurate and efficient ways to capture of large areas topographic data. PTMI owns and operates LiDAR equipment, which, is used to provide clients the data accuracy needed.

3D Digital Mapping

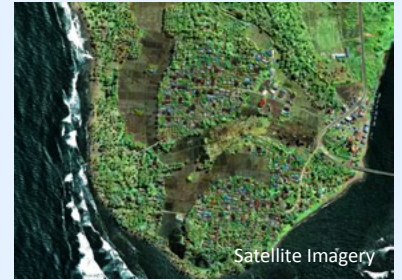
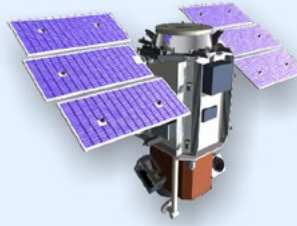


PTMI provides 3d digital mapping for several sectors, delivering:

- ✓ Digital Elevation Model and Digital Surface Model
- ✓ LiDAR Point Data
- ✓ Orthorectify Images
- ✓ 3D Contour
- ✓ Feature Mapping
- ✓ Cross Sections, Profiles
- ✓ Infrastructure Detail
- ✓ Volume Calculation
- ✓ Geographic Information System
- ✓ GIS Analysis



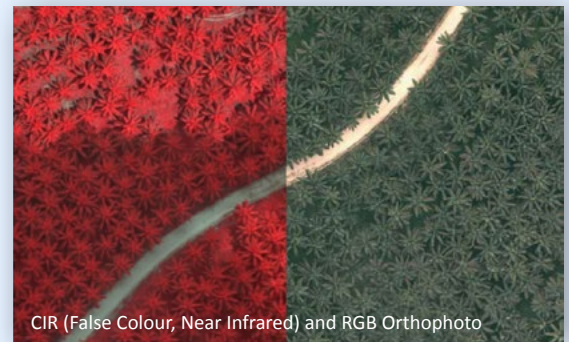
Remote Sensing



PTMI offers remote sensing services. Remote sensing data needs are assessed based on clients application requirements.

Remote Sensing Applications Include:

- ✓ Mineral Exploration
- ✓ Forestry Management
- ✓ Agricultural Monitoring
- ✓ Environmental Monitoring
- ✓ Natural Resources Monitoring
- ✓ Mapping & Planning
- ✓ Land Use Management
- ✓ GIS Integration



CIR (False Colour, Near Infrared) and RGB Orthophoto

Digital Orthophoto



From high resolution image rectification and enhancement to the final orthophoto product, PTMI delivers quality and cost effective customized products.

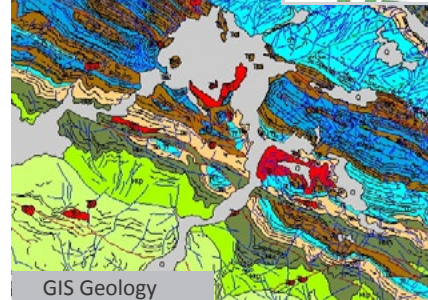
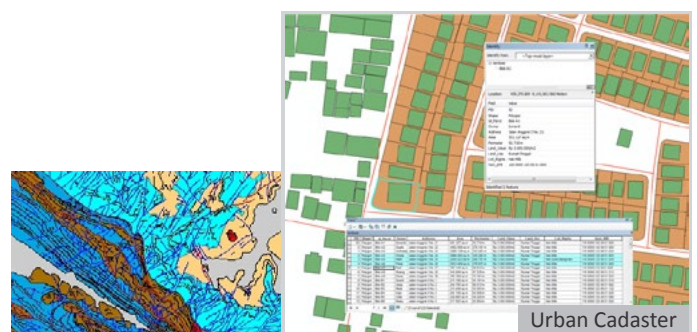
Digital Orthophoto supports:

- ✓ Map updating
- ✓ Land use planning/inventory
- ✓ Environmental analysis
- ✓ Resource management
- ✓ Land Management
- ✓ Flood Monitoring
- ✓ Change Detection



GIS

Geographic Information Systems (GIS) supports modeling and viewing spatial data relations. GIS analysis supports urban demographics, taxation, resource monitoring environment, transportation, utilities and communication.



Mapping The Future
www.ptm3i.com

Our Services :

Contact us :

E-mail : info@ptm3i.com